

LSG Sculpture Garden

Withiel (Cornish ; Gwydhyel) has links to 4th century Irish saint, St.Uvel and is derived from a word meaning "a place of trees". Withiel House, was known at Domesday as Berneves and belonged, for several centuries, to Bodmin Priory.

Withiel House sits within a 17th century estate situated close to the North Cornish coast, in the ancient village of Withiel. For the past two years I have been developing its 5 acre grounds into a sculpture garden. The orchards, woodland (where you'll find an ancient Cornish cross listed in the Domesday Book), and formal garden have been designed as an organic setting for the sculptures of our various gallery artists, which I hope to open within the next year.

Studded with mature beech trees, including an ancient copper beech that heralds the approach to the house, the woodland garden has been rescued from a tide of laurel and bramble. Now embellished with subtle plantings of ornamental trees, shrubs, shade-loving herbaceous perennials and bulbs to add to the existing understorey of bluebells, it is finding a new sense of itself.

As the kitchen garden continues to develop through its first full season so too does the formal garden to the north-west of the house. Here a series of enclosed yew rooms will offer a different perspective on space than the busyness of the kitchen garden or the wildness of the woods.

The garden has been developed by Tom Petherick, a celebrated author, broadcaster and authority on organic and biodynamic horticulture and agriculture, of Petherick, Urquhart and Hunt, alongside Bevan Rundle and his incredibly hardworking team. Artists will be represented nationally and internationally, and galleries such as Joanna Bird, Flowers gallery and Osborne Samuel are all contributing to LSG's latest venture!



18th May – 8th June

Gallery 2 & 3:
Matthew Draper: Northern Light



A momentous and beautiful body of work from Matthew Draper features his home city of Edinburgh and his exploration of the Scottish Highlands, while Jenny Wheatley's extraordinary bright and vivid still lifes and building facades will be shown in Gallery 1.

Private View:
Friday 17th May, 6-8pm

Gallery 1:
Jenny Wheatley: As I Walked Out



15th June – 6th July

R.S.A. The Royal Scottish Academy

This impressive exhibition will predominantly feature the work of Royal Scottish Academicians, among them Barbara Rae, Elizabeth Blackadder, John Byrne, Christine Borland, Robin Philipson, Lennox Dunbar, Adrian Wiszniewski, Victoria Crowe, Joe Fan, Steven Campbell, Kate Downie, Joyce Cairns, Jack Knox, David Michie, Doug Cocker, Alan Davie, Jo Ganter, Michael Agnew and Arthur Watson. The exhibition will also include the work of invited gallery artists.

Private View:
Friday 14th June, 6-8pm



13th July – 8th September

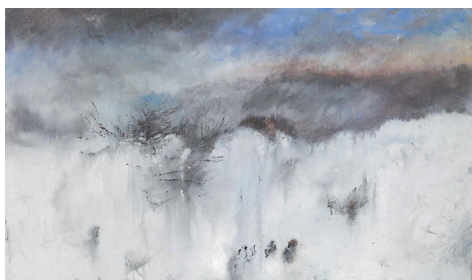
Len Tabner: Petites Sensations



The work of one of the UK's most important and influential landscape painters will feature across all three floors of Lemon Street Gallery for the very first time. Tabner shares with us in majestic grandeur his ability to identify with nature. Petites Sensations will explore his paintings and drawings from the 1960s and 70s, through to the present day. Come and see the work to spot his influences and those he has influenced.

Private View:

Friday 12th July, 6-8pm



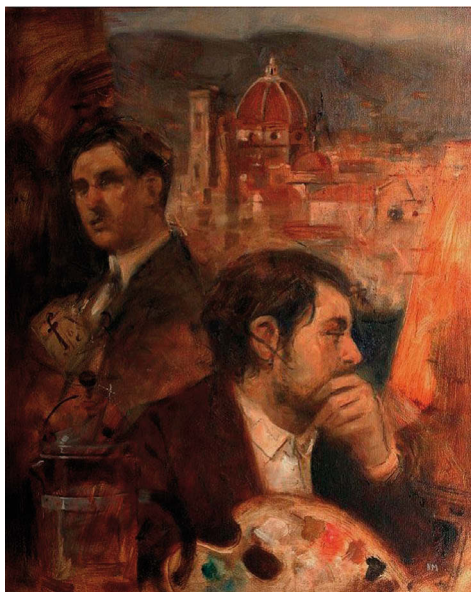
14th September – 12th October

Noel Murphy

The exhibition will feature work from Portrait and Assembly painter Noel Murphy. Based in Belfast, Murphy graduated from the University of Ulster in 1994, that same year winning the Bass Ireland Prize, and three years later won the Ireland Fund of Great Britain Annual Arts Award. This is his first exhibition with Lemon Street Gallery.

Private View:

Friday 13th September, 6-8pm



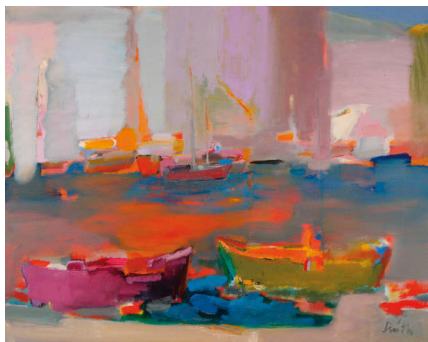
19th October – 16th November

Ronald F Smith RSW RGI

Glasgow School of Art graduate Ronald F Smith returns to Lemon Street Gallery with a beautiful new exhibition of semi-abstract landscape paintings, spanning all three floors.

Private View:

Friday 18th October, 6-8pm



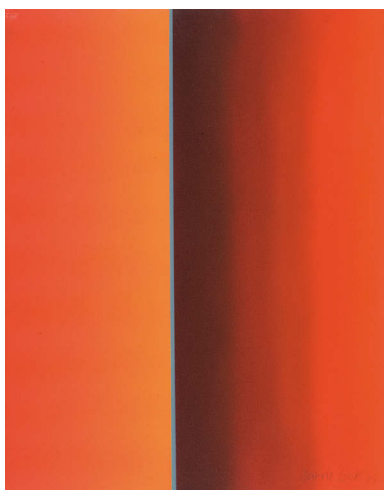
23rd November – 14th December

Barrie Cook

Cook's unique and iconic style of work, once described as "self-reflective, playful, apparently enjoying its ability to surprise its viewers – and indeed, its creator – through its versatility of form and colour" – will be showcased this November in a new body of work featuring canvases, works on paper and drawings.

Private View:

Friday 22nd November, 6-8pm



Kurt Jackson

After many years of successfully working together, Lemon Street Gallery has decided that the Gallery will no longer represent and support Kurt Jackson. LSG would like to wish him well with the many shows he has planned in the near future.



LSG

Opening times:

Monday - Saturday
10:30 - 5:30

Bank Holidays:
11:00 - 4:00

Lemon Street Gallery
13 Lemon Street
Truro, Cornwall TR1 2LS
Tel: +44 (0) 1872 275757
info@lemonstreetgallery.co.uk
www.lemonstreetgallery.co.uk